



## FLEXIPAN CUTTERS

Stainless steel cutters, with reinforced body. Specially designed for cutting biscuits meant to be used as bases for individual cakes formed in Flexipan.



Item #	Designed for	Shape
153046	For molds 336101-3-4	RECTANGULAR
153052	For molds 336135	SQUARE
153190	For molds 336190	EGG



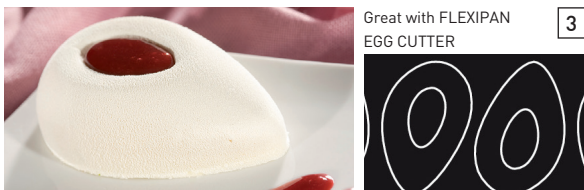
### RECTANGULAR CAKE MOLD

Item #	Sheet Sz	L"	W"	H"	Cap.	#	Wt
336101	23 3/4 x 15 3/4	3 1/6	1 1/6	1 1/6	1 7/8 oz.	24	1 lb.
336103	23 3/4 x 15 3/4	3 1/2	1 3/4	1	3 3/4 oz.	25	1 lb.
336104	23 3/4 x 15 3/4	4	2	1 1/8	4 oz.	21	1 lb.



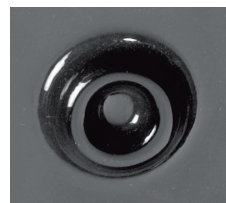
### SQUARE SAVARIN MOLD

Item #	Sheet Sz	L"	W"	H"	Cap.	#	Wt
336135	23 3/4 x 15 3/4	2 3/4	2 3/4	1 1/5	3 1/3 oz.	24	1 lb.



### EGGS MOLD

Item #	Sheet Sz	L"	W"	H"	Cap.	#
336190	23 3/4 x 15 3/4	3 3/4	2 1/3	1 1/5	3 1/5 oz.	25



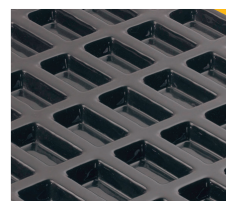
### SAVARIN MOLD

Item #	Sheet Sz	Ø"	H"	Cap.	#	Wt
336014	23 3/4 x 15 3/4	1 1/2	1/2	1/3 oz.	60	14 oz.
336015	23 3/4 x 15 3/4	2 7/8	7/8	2 oz.	24	1 lb. 1 oz.



### MINI-FINANCIERS MOLD

Item #	Sheet Sz	L"	W"	H"	Cap.	#	Wt
336009	23 3/4 x 15 3/4	2	1	1/2	1/3 oz.	84	15 oz.



### FINANCIERS MOLD

Item #	Sheet Sz	L"	W"	H"	Cap.	#	Wt
336010	23 3/4 x 15 3/4	3 1/2	1 7/8	1/2	2 oz.	24	1 lb.



### DISCS MOLD

Item #	Sheet Sz	Ø"	H"	Cap.	#	Wt
336030	23 3/4 x 15 3/4	5 3/4	1/2	6 3/4 oz.	6	1 lb. LARGE
336032	23 3/4 x 15 3/4	6 1/2	1/2	8 1/12 oz.	6	1 lb. XL
336022	23 3/4 x 15 3/4	7 1/3	1/2	10 1/6 oz.	6	1 lb. XXL